

Experiments in Lavender

Horticulture Study Group

Pioneer Unit

2025



HSG Leaders: Phoebe Lake and Madeline Johnson

Growers

- Courtney Kieke
- Deb Pruitt
- Diana Sellers
- Irene Spurrier
- Jana Rinehart
- Joanna Hagler
- Julia Johnson
- Karen Springer
- Leslie Conrads
- Linda Rowlett
- Martha Neva
- Royceanna Kendall
- Shawn Helm
- Susan Bame
- Vickie Wiste
- Wendy Matthews

Auditors

- Cammie Beierle
- Dawn Wilson
- Ginger Heath
- Sally Reynolds



The Lavender Study

Presenter

Madeline Johnson

Plant

Cultivate

Report

Photograph

Design

Prep Beds

Measure

Acknowledgements

- Texas Lavender Association - \$1000 grant
- Pioneer Unit Budget -- \$750 (includes plants)
- Individual Donations -- \$300

THANK YOU!

Bed Preparation

- Water Drainage Test - dig hole 12-15”
- South or East location
- Good Air Circulation
- Raised Bed – 4” along edge to 5” in the center
- In-Ground Bed amended with shale and compost but level with rest of area
- 3-Way Soil Mix for Raised Bed and Containers
- Black Mineral Containers (25 gallon)





Phoebe's Beds



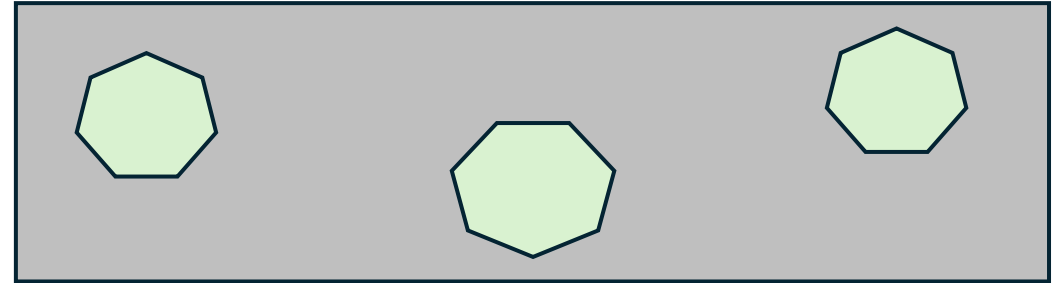
Linda's Beds



Madeline's Beds

Experiment Design

Planting Arrangement for Raised & In-Ground Beds



Group A

Container	Raised Bed	In-ground
Fernleaf	Vera	Provence
French	Grosso	Sweet
	Otto Quast	Goodwin Creek

Group B

Container	Raised Bed	In-ground
Fernleaf	Provence	Vera
French	Sweet	Grosso
	Goodwin Creek	Otto Quast

Plantings



Fernleaf

- *Lavendula multifida*
- aka French Lace Lavender
- 2 feet wide and tall
- Can flower year round
- Zones 8-10
- Sunny, dry but can tolerate some moisture
- Hardy to 20 degrees F
- Some pine undertones
- Remove spent flowers to encourage new growth



Fernleaf In the Beginning

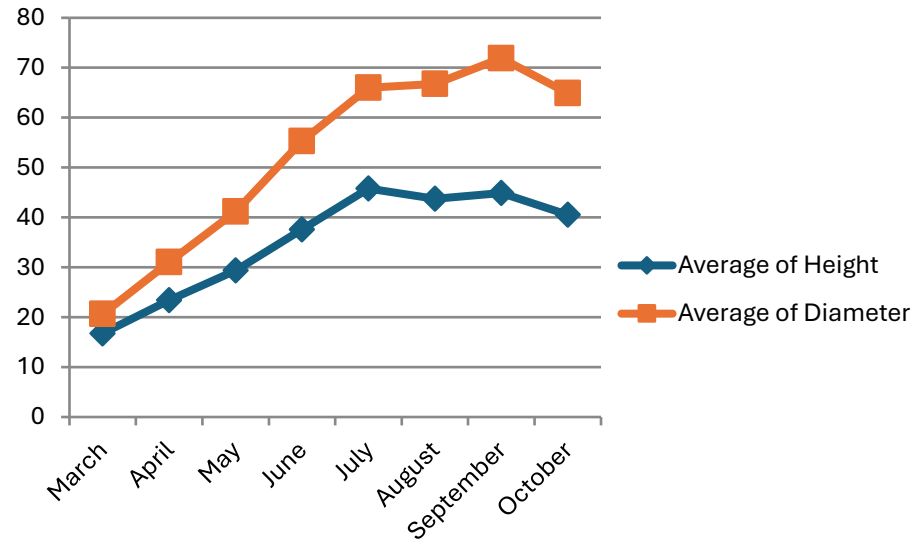


Fernleaf In the Fall

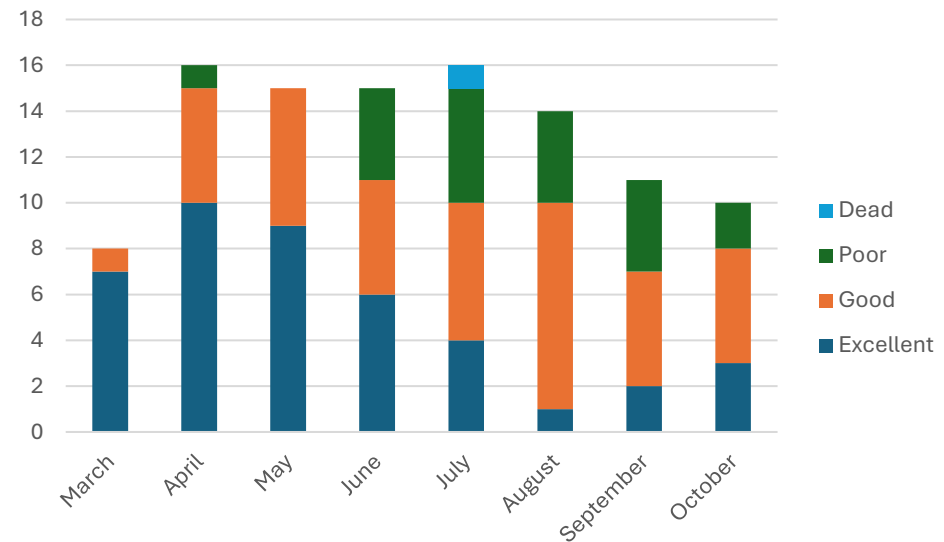


From Wendy

Fernleaf



Container Grown



French

- *Lavandula dentata*
- Less fragrant than English lavender
- Blooms Spring to Fall
- Not used for culinary
- 2 ft tall and wide
- Sunny, hot, dry conditions
- Alkaline soil
- Drought tolerant



French In the Beginning

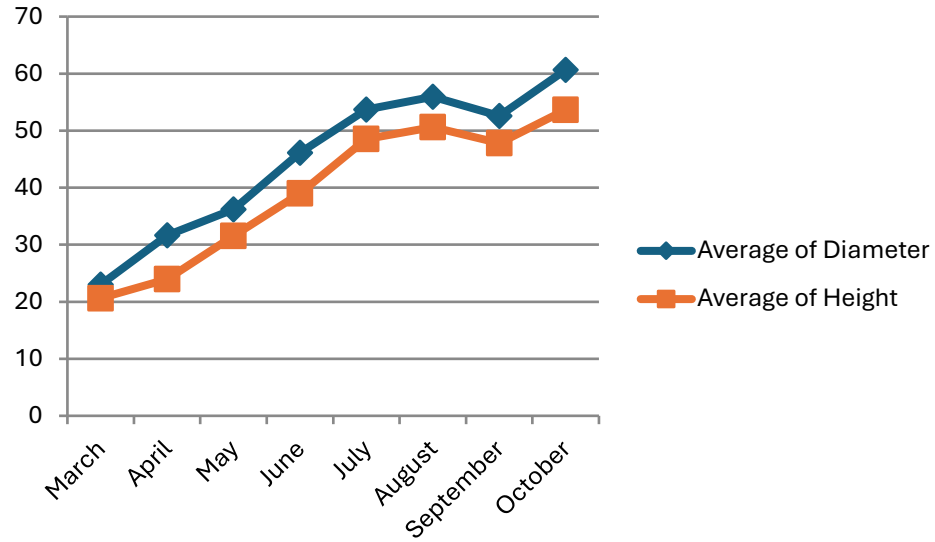


French In the Fall

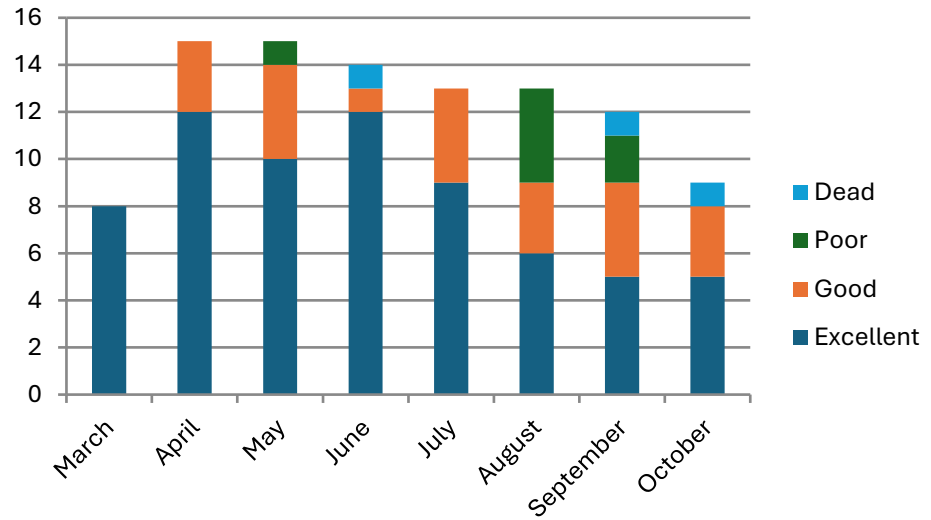


From Martha

French



Container Grown



Otto Quast

- *Lavandula stoechas*
- Blooms Spring to Fall
- Heat Loving, drought tolerant
- Height 2-3 ft
- Width up to 2 ft
- Butterfly-like bracts



Otto Quast In the Beginning

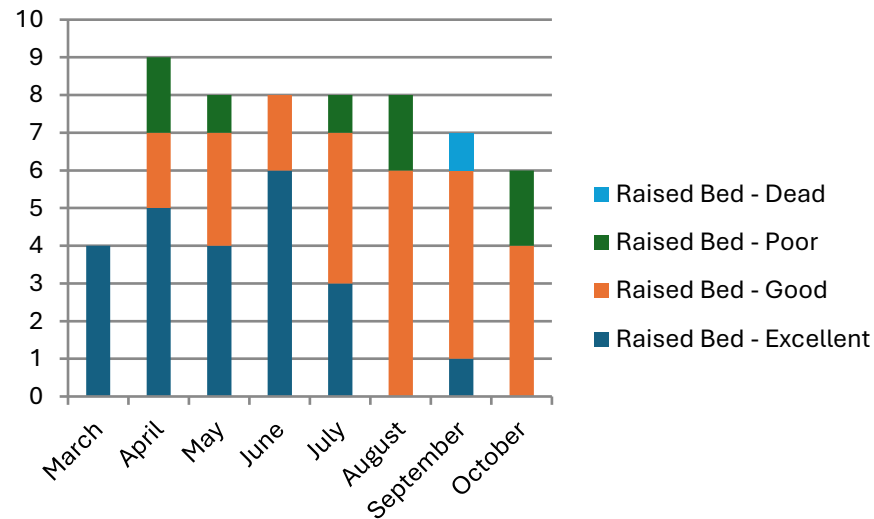
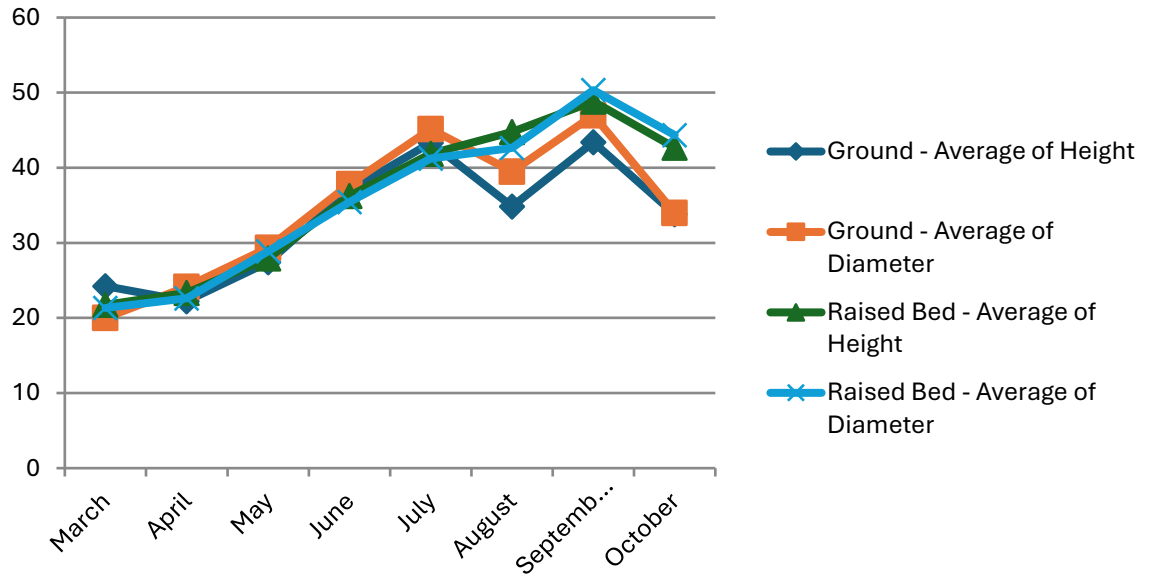
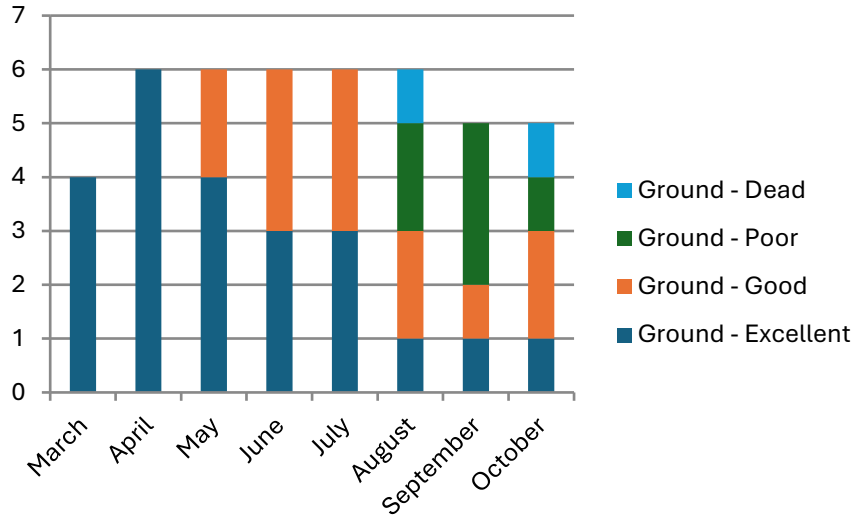


Otto Quast In the Fall



From Julie

Otto Quast



Ground: 9 Growers
Raised: 10 Growers

Goodwin Creek

- *Lavandula x ginginsii*
- 2- 4 ft tall and wide
- Silver-grey foliage
- Long flower spikes
- Fragrant suitable for cutting
- Culinary – flowers
- Sun, Dry



Goodwin Creek In the Beginning

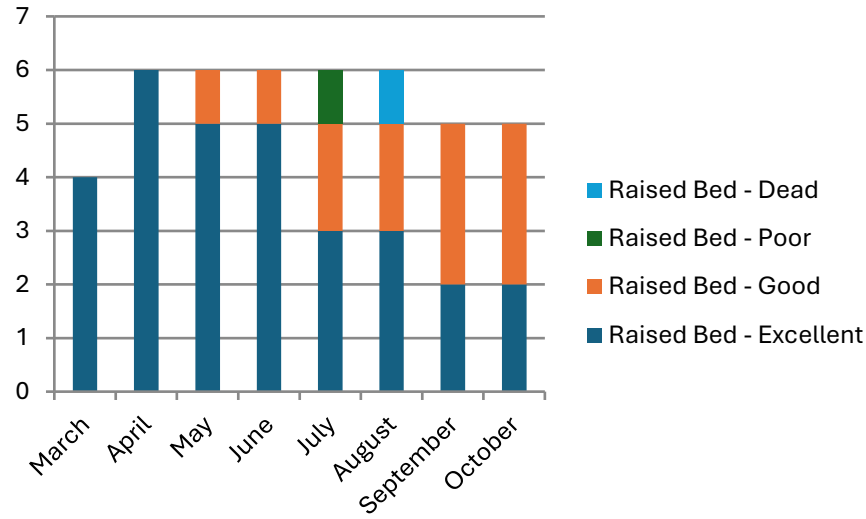
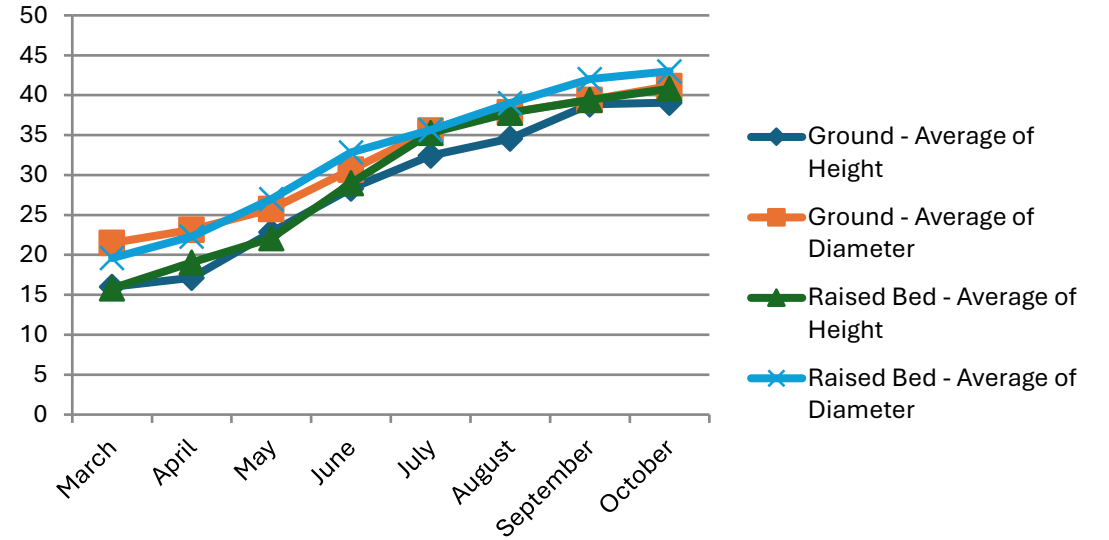
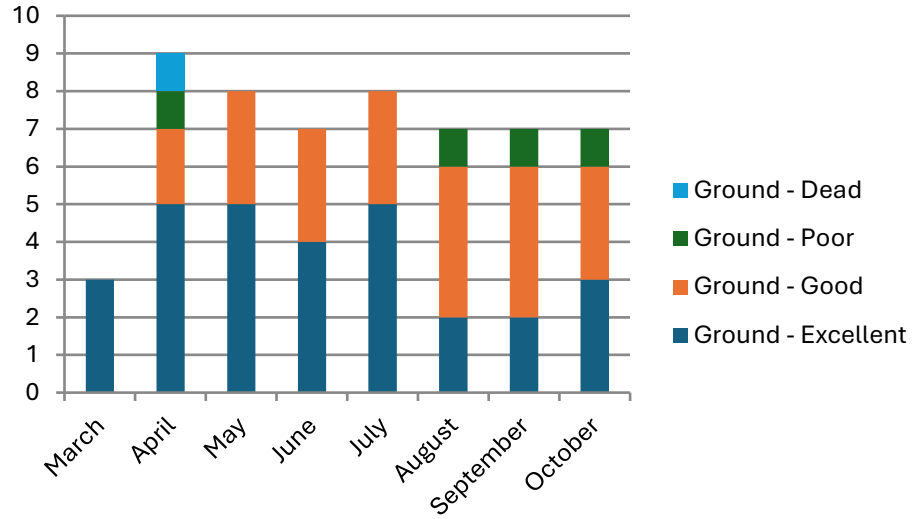


Goodwin Creek In the Fall



From Linda

Goodwin Creek



Ground: 10 Growers
 Raised: 8 Growers

Provence

- *Lavandula x intermedia*
- Highly fragrant
- Light purple bloom
- Dried flowers uses
- 2 ft wide and tall
- Water regularly during 1st growing season
- Remove spent flowers to promote blooming



Provence In the Beginning

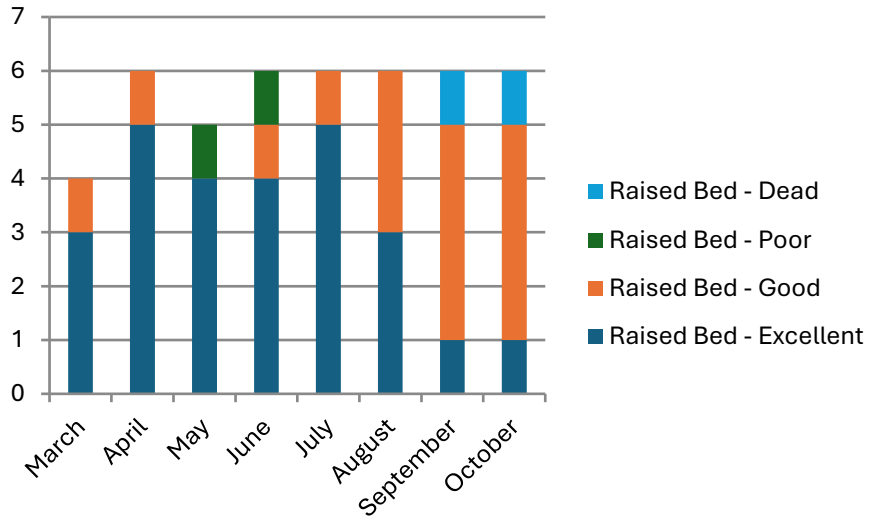
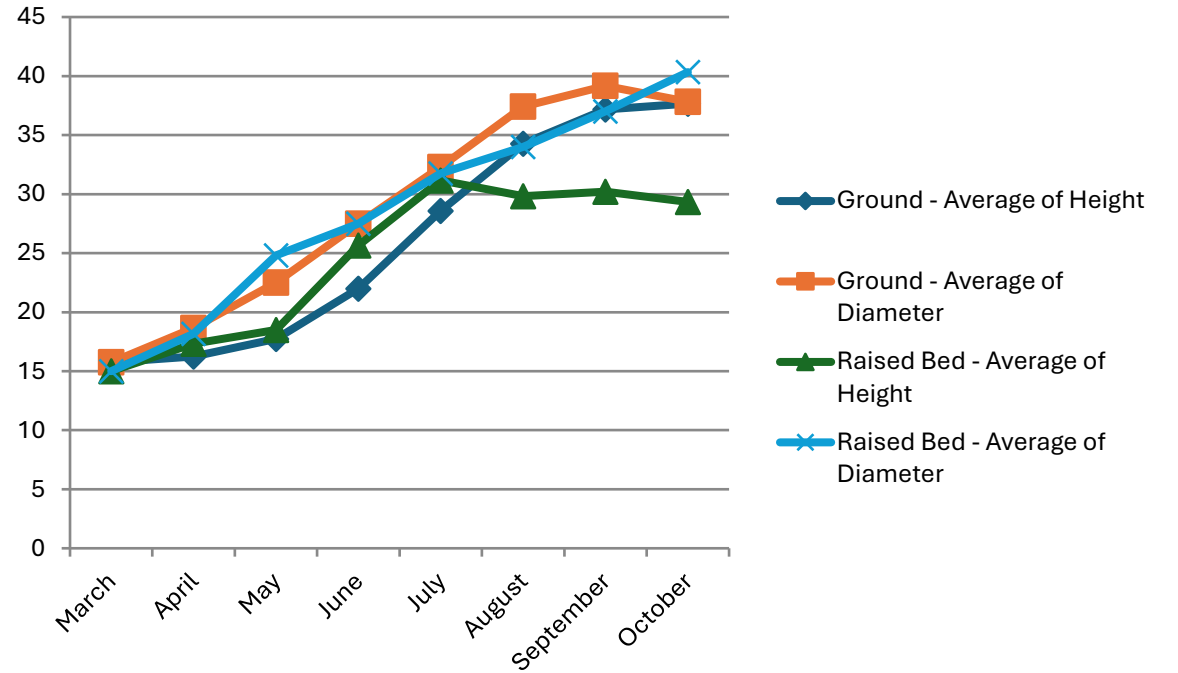
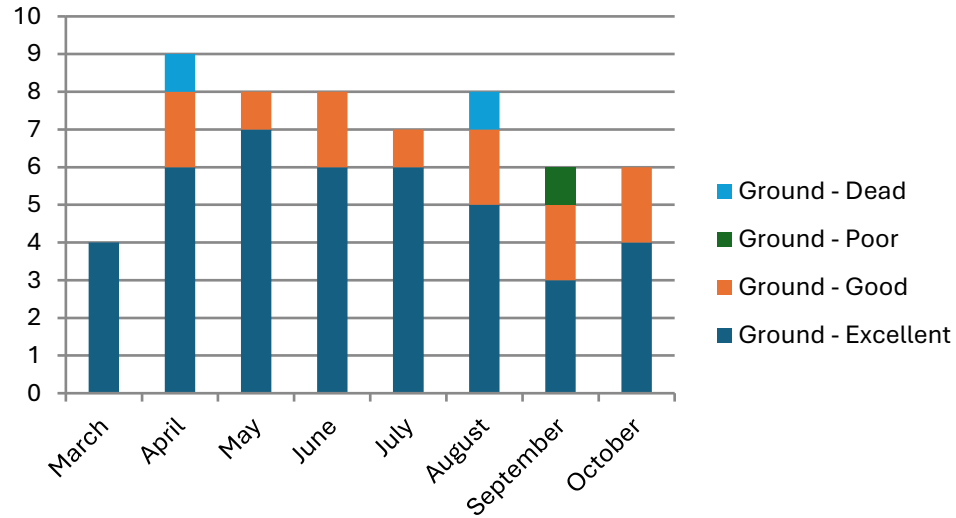


From Irene

Provence In the Fall



Provence



Ground: 9 Growers
 Raised: 8 Growers

Sweet

- *Lavandula x heterophylla*
- 4 ft tall and wide
- Medium fragrance
- Not for culinary
- More tolerant of heat and humidity
- Best for potpourri and wands
- Hardy to 20 degrees F



Sweet In the Beginning

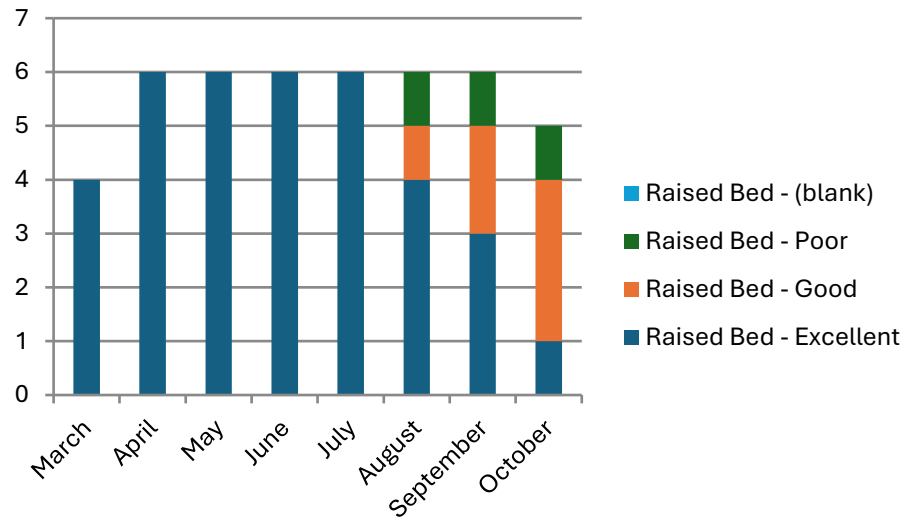
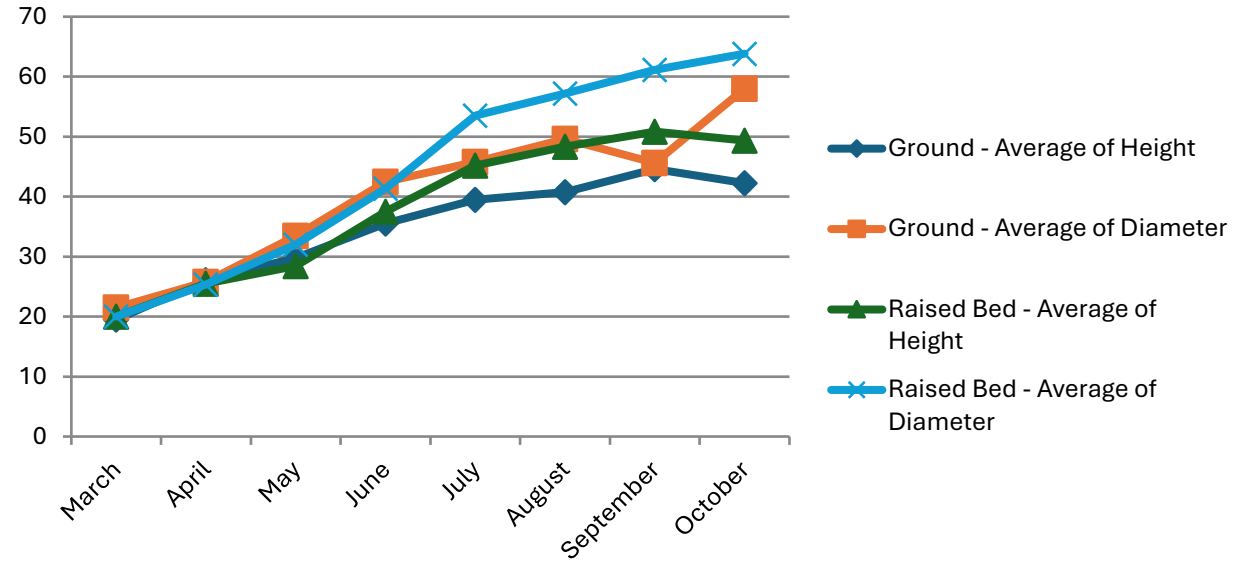
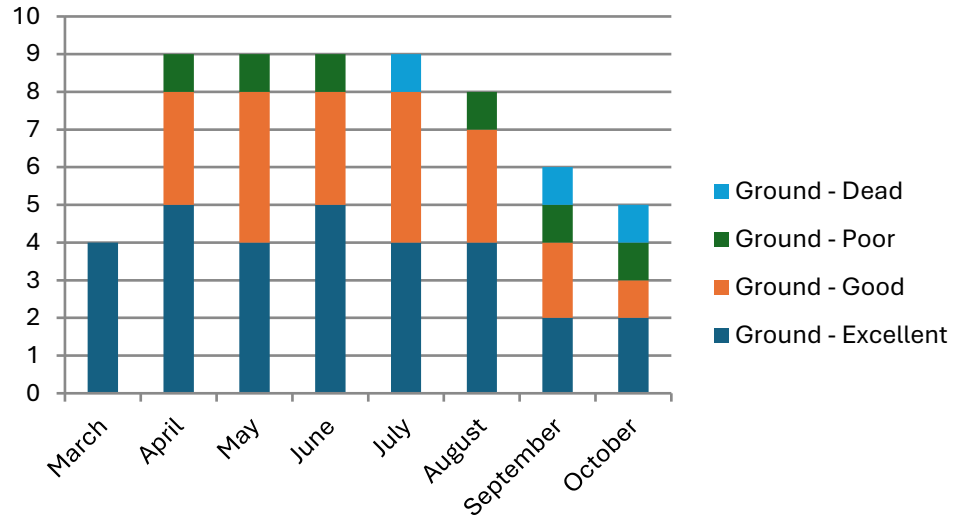


Sweet In the Fall



From Courtney

Sweet



Ground: 10 Growers
Raised: 9 Growers

Grosso

- *Lavandula intermedia*
- Highly Fragrant
- Dark Purple atop long sturdy stems
- 3 ft tall and wide
- Sun, Well Drained Soil
- Subject to Root Rot
- Tolerant of humidity
- Water several times per week to establish



Grosso In the Beginning

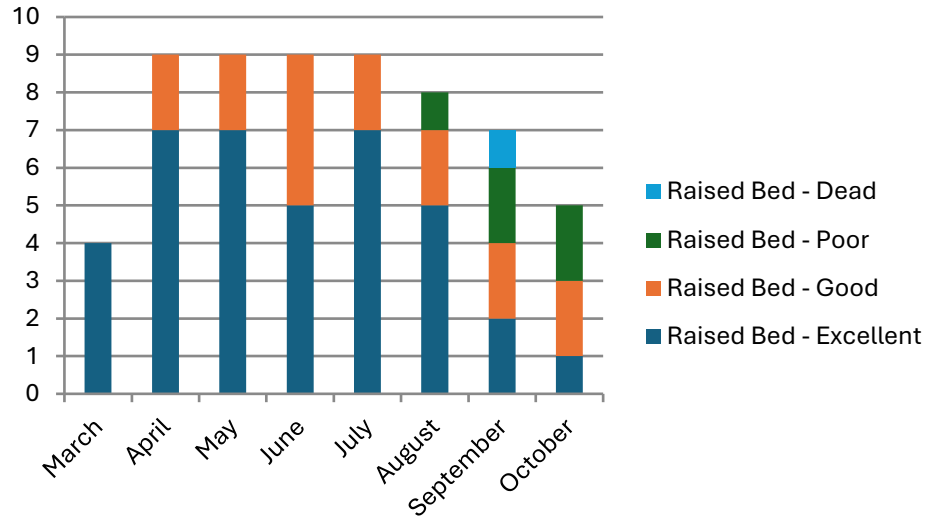
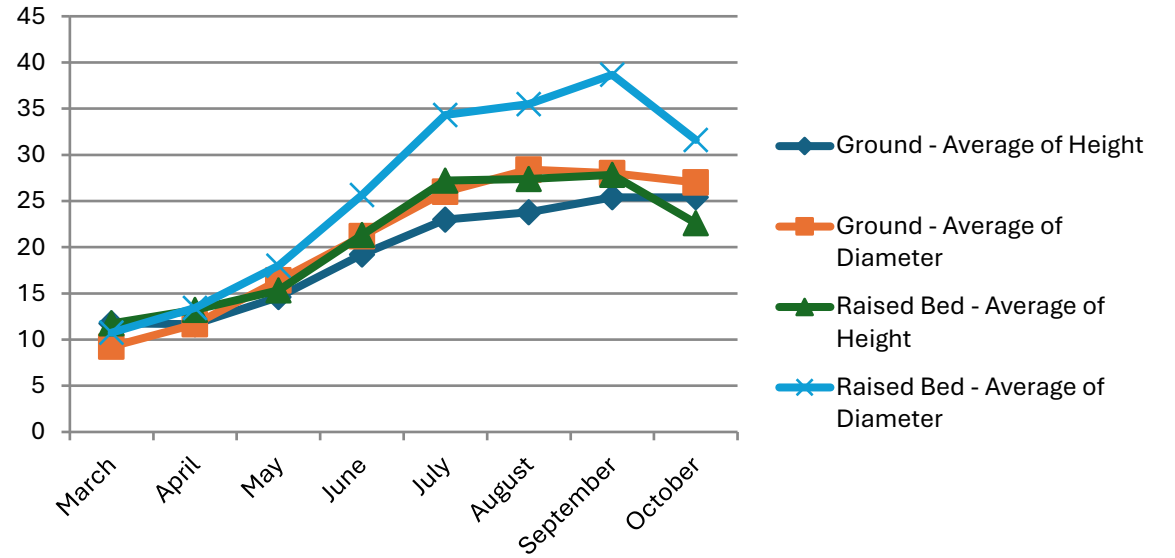
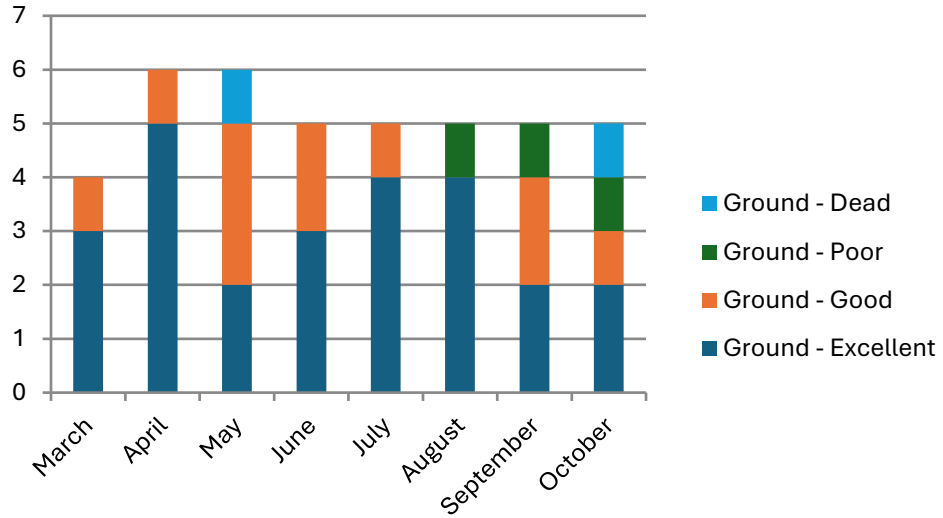


Grosso In the Fall



From Susan

Grosso



Ground: 8 Growers
Raised: 10 Growers

Vera

- *Lavandula angustifolia*
- Aka Old fashioned English lavender
- Sweetly fragrant oil
- 1 ft tall 2 ft wide
- 2-3 growing seasons to reach maturity
- Sun, sandy soil, good drainage



Vera In the Beginning

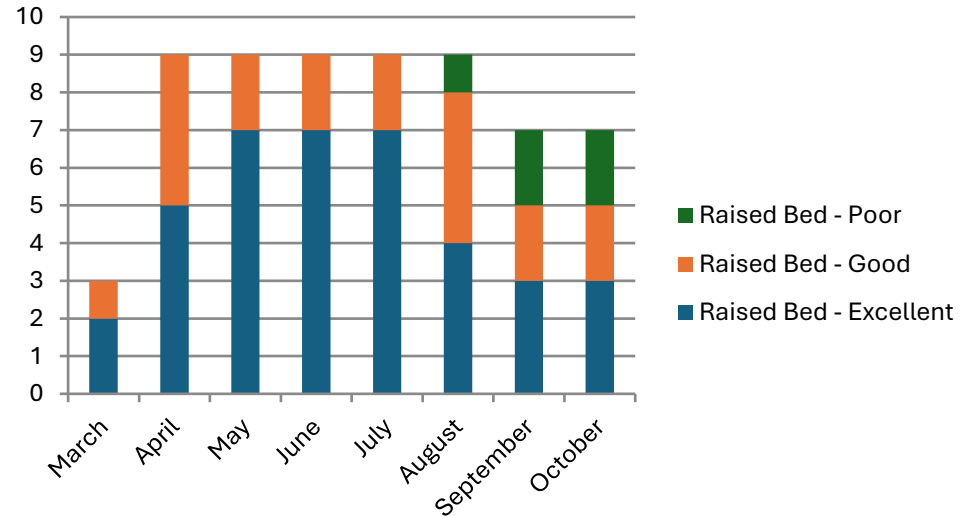
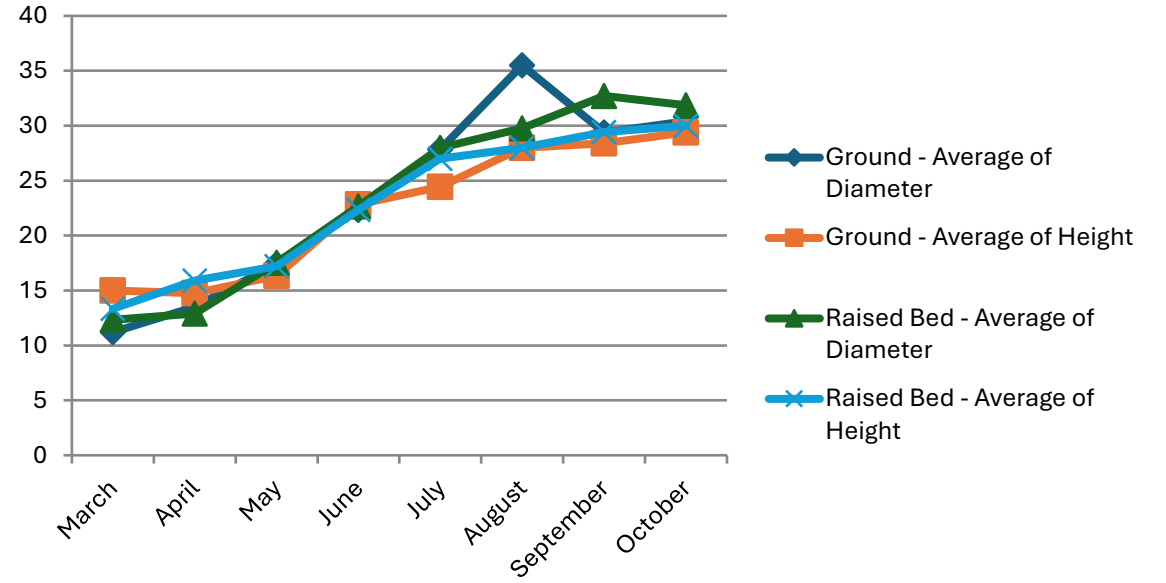
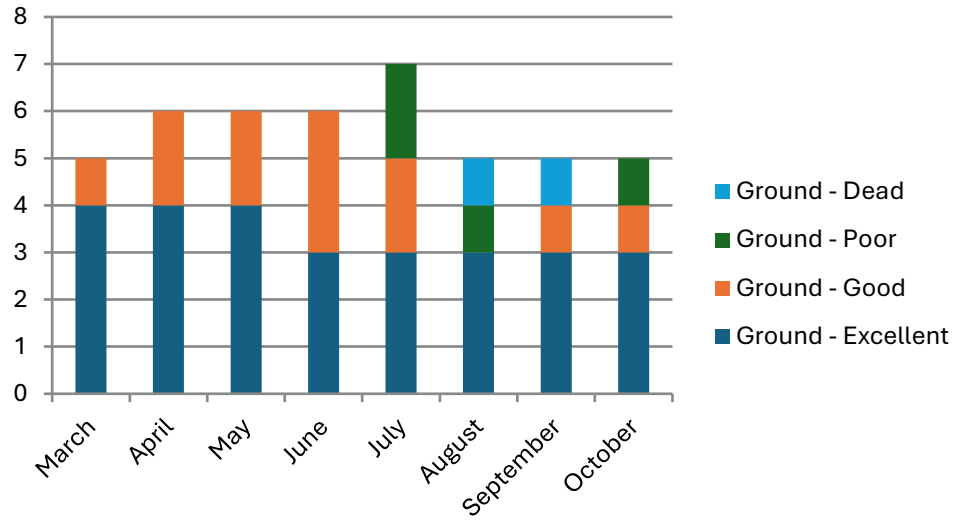


From Vickie

Vera In the Fall



Vera



Ground: 9 Growers
 Raised: 10 Growers

General Observations

- Lavenders perform well in containers.
- Fernleaf requires more water than other lavenders – tends to die back if it gets too dry.
- The differences in growth rates between raised beds vs in-ground beds were minimal.
- In-ground beds were placed where the drainage was good with shale and compost added. Gravel/stones used for mulching.
- Based on observation by the growers, these lavenders appeared healthier when grown in raised beds:
 - Goodwin Creek
 - Sweet*
 - Grosso*
 - Vera*
- Prevention of fungal infections is very important

*fewer deaths in raised beds

Final Thoughts on Growing Lavender

- Careful placement of the bed or container (good drainage, air circulation, full sun)
- Proactive fungal prevention (pebble mulch, antifungal treatment)**
- Water when dry (except for Fernleaf which needs more frequent watering)
- Don't expect a bounty of blooms the first year
- Lavender will grow here with careful planning and proactive fungal prevention